

JUNCTION BOXES



MAIN TECHNICAL FEATURES

Thermoresistant material: shock resistant halogen free technopolymer on ABS base.

Self-extinguishing material: shock resistant self-extinguishing V0 (UL94) technopolymer on ABS base.

Polycarbonate material: shock resistant thermoresistant (up to 120°C) halogen free technopolymer.

Outdoor installations: high resistance to ageing and UV rays.

Halogen free: plastic materials resistant to chemicals, acids and bases containing Cadmium and halogens.

Shock resistance IK08 (shocks up to 6j).

Resistance to abnormal heat (Glow Wire Test): up to 650° C for standard, up to 960°C for type A (self-extinguishing).

Installation temperature: min. -5°C, max +60°C.

Operating temperature: min. -25°C, max (ABS) +70°C, max (PC) +120°C.

Boxes suitable for a complete installation, according to the Standards IEC 60670-1/24 by screw caps.

Boxes suitable for the set of back plates or DIN rails.

Single or multiple package with protective transparent film, packed in strong cardboard boxes.

Reference Standards EN 60670-1:2005, EN 60670-22:2006.

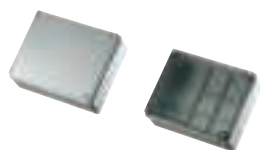
Products complying with the main requirements of the regulation B.T. 2006/96/CE.

Products complying with the regulation RoHS 2002/95/CE.

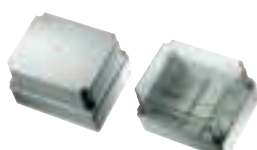
Thermoresistant boxes



Junction boxes with stepped glands Series 400 page 248



Smooth-sided junction boxes with blank/transparent lid Series 410/420 page 250



Smooth-sided junction boxes with high blank/transparent lid Series 430/440 page 252

Self-extinguishing boxes V0

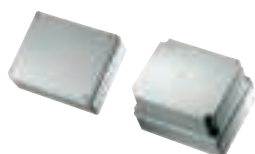


V0 self-extinguishing with stepped glands IP44/IP55 Series 400A page 254



Smooth-sided junction boxes with blank lid IP56 Series 410A page 256

Polycarbonate 120°C boxes



Smooth-sided junction boxes with blank lid IP56 page 257

Thermoresistant junction boxes with ¼ turn screws



Junction box with stepped glands or cable direct inlet IP55 Series 401/405 page 259



Smooth-sided junction boxes with blank lid IP56 Series 415 page 259

Self-extinguishing V0 boxes with ¼ turn screws

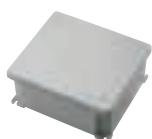


Junction boxes with stepped glands or cable direct inlet IP55/IP56 Series 405A/401A/415A page 260



Junction boxes with stepped glands or cable direct inlet IP55/IP56 Series 406A/407A/416A page 261

Aluminium boxes



Aluminium smooth-sided junction boxes Series 485 page 264

Wall mounting boxes



Wall mounting warning lights page 265



IP55 Self-supporting covers page 265



IP40/IP55 Wall boxes for electrical devices Series 300 page 266

Alveolar boards



Boards with alveolar or smooth reversible door page 267

TECHNICAL SPECIFICATION

Particularly strong design to grant the right rigidity also on rough or irregular walls

Integrated hinges for an easy and quick installation

The back plates, the din rails and the brass terminal blocks can be mounted very easily thanks to the proper guides



A draining hole can be easily made in the box wall

Soft stepped glands perfectly fitting to the box and easy to cut

Anticorrosive steel screws or quick-closing ¼ turn plastic screws

Lid with integrated gasket

The wall mounting junction boxes are manufactured both with thermoresistant halogen free raw material and with self-extinguishing (V0 according to the Standard UL94) raw material. With 175 items, divided in different series, the range of the wall mounting boxes fulfils any distribution or derivation need the installer has: stepped glands or smooth-sides, solid or clear covers, low or high covers, steel

or plastic screws. The boxes made of self-extinguishing ABS with a high resistance to abnormal heat (960° C) is suitable for the heaviest applications and, in the red version, can be used in fire and security systems.

The polycarbonate boxes offer the installers the ideal solution for their specific and particular applications.

The boxes can be installed very

easily and quickly thanks to the accessories supplied with the box or available as fittings.

The high mechanical strength protects the wiring devices and equipments in the outdoor installations, in industrial and domestic applications.

The range also includes the boxes suitable for electrical devices like GW systems, Magic or similar ones.

TECHNICAL SPECIFICATION

Integrated hinge with snap, possibility to separate the cover, 90° opening of the cover at box edge



Plastic and steel back plates to fix wiring devices and equipments

The bottom has some guides to directly fix the brass terminal blocks, the devices or the back plates



The covers are closed by steel screws, insulating screws or quick-closing ¼ turn screws

All the boxes are equipped with steel or plastic screws



The lid of the quick-closing boxes is linked to the bottom for the max. functionality in any condition of installation

The junction boxes are characterized by some peculiar solutions which make the cabling works easier and quicker, which means a sure time and money saving for the installer.

From the dimensions 300x220 cm the boxes have a separable integrated hinge: that means no kit to install, 90° opening of the cover at box edge, the lid can be separated from the box without any tool and snapped again after carrying out the wiring or the assembling in the workshop.

The steel or plastic back plates are

a sure advantage because they can be wired in the workshop and then installed; they allow to make the most of the room available, gaining in this way a more efficient installation.

The bottom guides existing in any box model allow to fix the brass terminal blocks, the DIN rails EN50022, the equipments and the back plates directly to the box bottom.

The box with ¼ turn screws have the references on the cover: "0" closed and "1" open. Once aligned to the screw slot they clearly

indicate if the cover is closed or open.

Two of the four screws are linked to the bottom, which can be easily separated to make the fixing and the wiring works easier, and mounted again also in a different position.

If the junction boxes are put on conductive surfaces, they can be equipped with the screw caps (to be bought separately) to gain a double insulation. In this way they become fully insulated according to the Standard IEC 60670-1/24.

mounting examples





JUNCTION BOXES WITH STEPPED GLANDS **SERIES 400**

MAIN TECHNICAL FEATURES:

- Bottom and lid made of thermoresistant ABS.
- Snap-on cover.
- Threaded holes for wall mounting and system to prevent unscrewing.
- Soft stepped glands.
- 5-piece package with protective transparent film.



IP 44



ITEM	INTERNAL DIMENSIONS mm	HOLE NUMBER	MAX CONDUIT DIAM. mm	PACKAGING PIECES
EC400C1	Ø 65x35	4	20	5/120
EC400C2	Ø 80x40	4	20	5/150
EC400C3	80x80x40	6	20	5/160



EC400C1



EC400C2



EC400C3

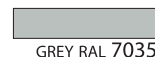
JUNCTION BOXES WITH STEPPED GLANDS **SERIES 400**

MAIN TECHNICAL FEATURES:

- Bottom and lid made of thermoresistant ABS.
- Snap-on cover.
- High-resistant soft rubber inner gasket.
- Soft stepped glands.
- Possibility of a double insulation (Reference Standard EN 60439).
- Internal guide to fix the DIN rail EN 50022, brass terminal blocks or back plates.
- Single package with protective transparent film.



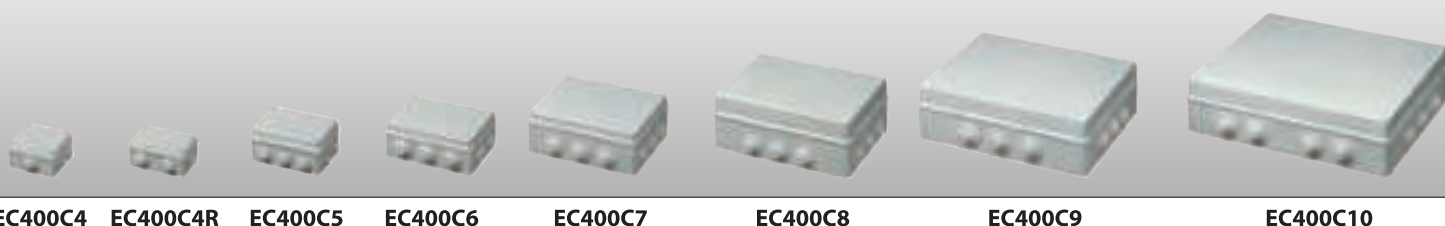
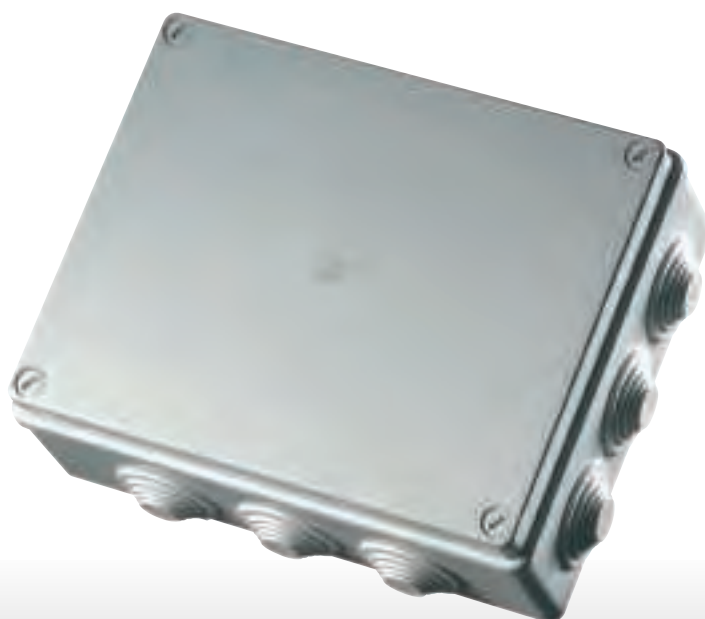
IP 55



ITEM	INTERNAL DIMENSIONS mm	HOLE NUMBER	MAX CONDUIT DIAM. mm	PACKAGING PIECES
EC400C4	100x100x50	6	25	1/90
EC400C4R	120x80x50	6	25	1/90
EC400C5	150x110x70	10	25	1/45
EC400C6	190x140x70	10	32	1/25
EC400C7	240x190x90	12	32	1/14
EC400C8*	300x220x120	12	32	1/6
EC400C9*	380x300x120	12	40	1/4
EC400C10*	460x380x120	14	40	1/4

• Nylon screws

* Nylon screws and hinged lid



EC400C4

EC400C4R

EC400C5

EC400C6

EC400C7

EC400C8

EC400C9

EC400C10

SMOOTH-SIDED JUNCTION BOX SERIES 410

MAIN TECHNICAL FEATURES:

- Bottom and lid made of thermoresistant ABS.
- Screw cover.
- High-resistant soft rubber inner gasket.
- Possibility of a double insulation (Reference Standard EN 60439).
- Internal guide to fix the DIN rail EN 50022, brass terminal blocks or back plates.
- Single package with protective transparent film.



IP 56

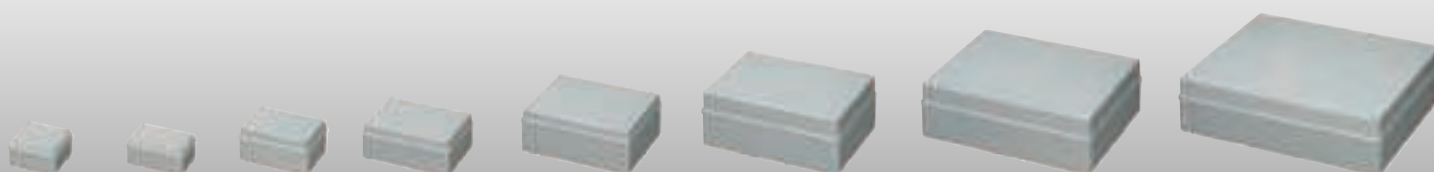


ITEM	INTERNAL DIMENSIONS mm	PACKAGING PIECES
EC410C4	100x100x50	1/100
EC410C4R	120x80x50	1/100
EC410C5	150x110x70	1/42
EC410C6	190x140x70	1/24
EC410C7	240x190x90	1/16
EC410C8*	300x220x120	1/6
EC410C9*	380x300x120	1/4
EC410C10*	460x380x120	1/4

• Nylon screws

* Nylon screws and hinged cover

*HALOGEN
Free*



EC410C4

EC410C4R

EC410C5

EC410C6

EC410C7

EC410C8

EC410C9

EC410C10

SMOOTH-SIDED JUNCTION BOXES **SERIES 420**

MAIN TECHNICAL FEATURES:

- Bottom made of thermoresistant ABS.
- Polycarbonate transparent smoky grey screw cover.
- High-resistant soft rubber inner gasket.
- Possibility of a double insulation (Reference Standard EN 60439).
- Internal guide to fix the DIN rail EN 50022, brass terminal blocks or back plates.
- Single package with protective transparent film.



IP 56

GREY RAL 7035

ITEM	INTERNAL DIMENSIONS mm	PACKAGING PIECES
EC420C5	150x110x70	1/42
EC420C6	190x140x70	1/24
EC420C7	240x190x90	1/16
EC420C8*	300x220x120	1/6
EC420C9*	380x300x120	1/4
EC420C10*	460x380x120	1/4

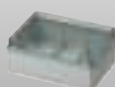
• Nylon screws

* Nylon screws and hinged cover

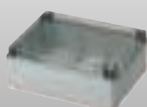
*HALOGEN
Free*



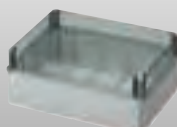
EC420C5



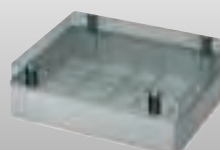
EC420C6



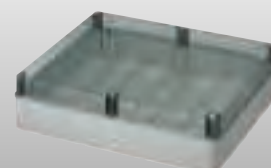
EC420C7



EC420C8



EC420C9



EC420C10

SMOOTH-SIDED JUNCTION BOXES **SERIES 430**

MAIN TECHNICAL FEATURES:

- Bottom and lid made of thermoresistant ABS.
- The high lid assures a big inner volume for industrial applications.
- Screw cover.
- High-resistant soft rubber inner gasket.
- Possibility of a double insulation (Reference Standard EN 60439).
- Internal guide to fix the DIN rail EN 50022, brass terminal blocks or back plates.
- Single package with protective transparent film.



IP 56

GREY RAL 7035

ITEM	INTERNAL DIMENSIONS mm	PACKAGING PIECES
EC430C5	150x110x140	1/18
EC430C6	190x140x140	1/16
EC430C7	240x190x160	1/8
EC430C8*	300x220x180	1/4
EC430C9*	380x300x180	1/3

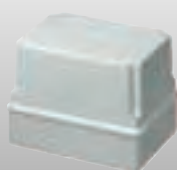
• Nylon screws

* Nylon screws and hinged cover

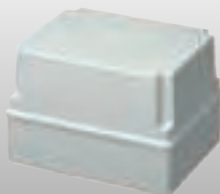
*HALOGEN
Free*



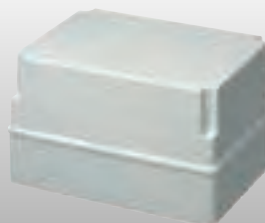
EC430C5



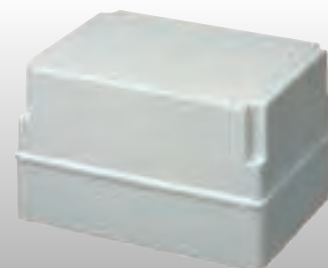
EC430C6



EC430C7



EC430C8



EC430C9

SMOOTH-SIDED JUNCTION BOXES **SERIES 440**

MAIN TECHNICAL FEATURES:

- Bottom made of thermoresistant ABS.
- The high lid assures a big inner volume for industrial applications.
- Polycarbonate transparent smoky grey screw cover.
- High-resistant soft rubber inner gasket.
- Possibility of a double insulation (Reference Standard EN 60439).
- Internal guide to fix the DIN rail EN 50022, brass terminal blocks or back plates.
- Single package with protective transparent film.



IP 56

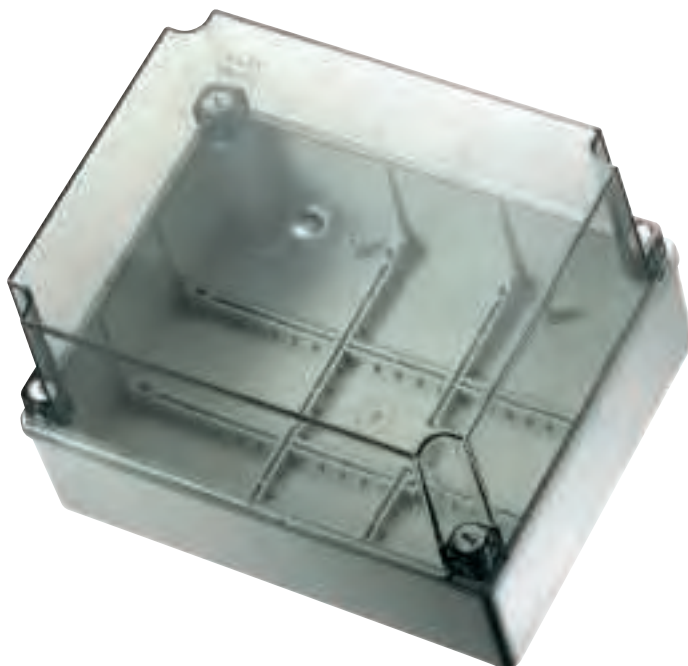
GREY RAL 7035

ITEM	INTERNAL DIMENSIONS mm	PACKAGING PIECES
EC440C5	150x110x140	1/18
EC440C6	190x140x140	1/16
EC440C7	240x190x160	1/8
EC440C8*	300x220x180	1/4
EC440C9*	380x300x180	1/3

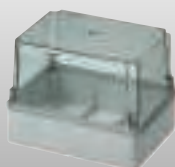
• Nylon screws

* Nylon screws and hinged cover

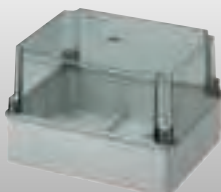
*HALOGEN
Free*



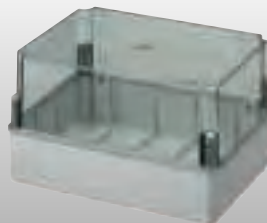
EC440C5



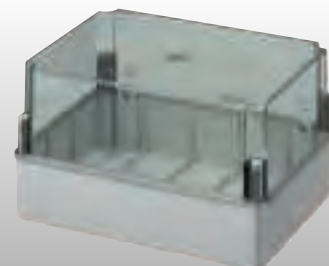
EC440C6



EC440C7



EC440C8



EC440C9

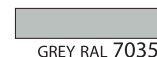
JUNCTION BOXES WITH STEPPED GLANDS **SERIES 400A**

MAIN TECHNICAL FEATURES:

- Bottom and lid made of self-extinguishing V0 (UL94) ABS.
- Resistance to abnormal heat : up to 960° C (Glow Wire Test according to the Standard IEC 695-2-1).
- Snap cover.
- Possibility of a double insulation (Reference Standard EN 60439).
- Threaded holes for wall mounting and system to prevent unscrewing.
- Soft stepped glands.
- Single package with protective transparent film.



IP 44



ITEM	INTERNAL DIMENSIONS mm	HOLE NUMBER	MAX CONDUIT DIAM. mm	PACKAGING PIECES
EC400C1A	Ø 65x35	4	20	5/120
EC400C2A	Ø 80x40	4	20	5/150
EC400C3A	80x80x40	6	20	5/160

self-extinguishing



EC400C1A



EC400C2A



EC400C3A

JUNCTION BOXES WITH STEPPED GLANDS **SERIES 400A**

MAIN TECHNICAL FEATURES:

- Bottom and lid made of self-extinguishing V0 (UL94) ABS.
- Resistance to abnormal heat : up to 960° C (Glow Wire Test according to the Standard IEC 695-2-1).
- Screw cover.
- High-resistant soft rubber inner gasket.
- Soft stepped glands.
- Possibility of a double insulation (Reference Standard EN 60439).
- Internal guide to fix the DIN rail EN 50022, brass terminal blocks or back plates.
- Single package with protective transparent film.



IP 55

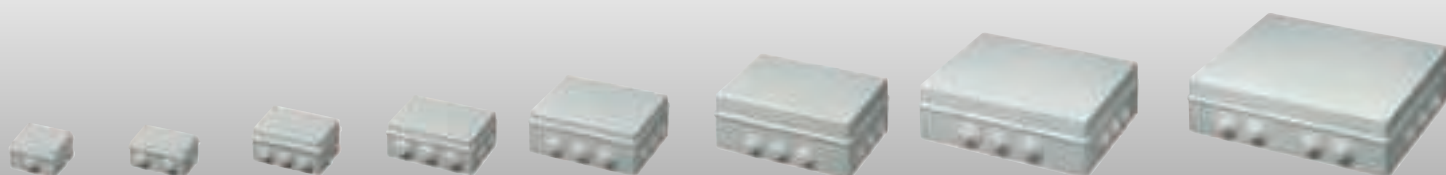
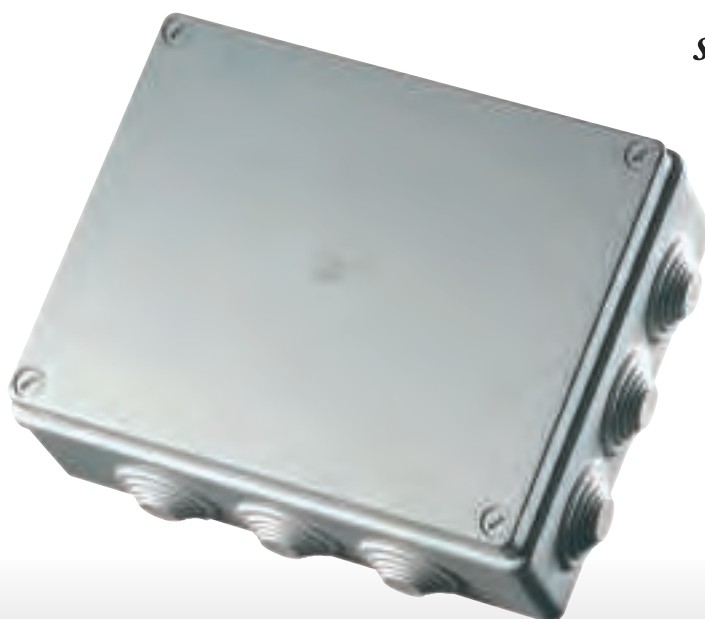
GREY RAL 7035

ITEM	INTERNAL DIMENSIONS mm	HOLE NUMBER	MAX CONDUIT DIAM. mm	PACKAGING PIECES
EC400C4A	100x100x50	6	25	1/90
EC400C4RA	120x80x50	6	25	1/90
EC400C5A	150x110x70	10	25	1/45
EC400C6A	190x140x70	10	32	1/25
EC400C7A	240x190x90	12	32	1/14
EC400C8A*	300x220x120	12	32	1/6
EC400C9A*	380x300x120	12	40	1/4
EC400C10A*	460x380x120	14	40	1/4

• Nylon screws

* Nylon screws and hinged cover

self-extinguishing



EC400C4A EC400C4RA EC400C5A EC400C6A EC400C7A EC400C8A EC400C9A EC400C10A

SMOOTH-SIDED JUNCTION BOXES **SERIES 410A**

MAIN TECHNICAL FEATURES:

- Bottom and lid made of self-extinguishing V0 (UL94) ABS.
- Resistance to abnormal heat: up to 960° C (Glow Wire Test according to the Standard IEC 695-2-1).
- Screw cover.
- High-resistant soft rubber inner gasket.
- Possibility of a double insulation (Reference Standard EN 60439).
- Internal guide to fix the DIN rail EN 50022, brass terminal blocks or back plates.
- Single package with protective transparent film.



IP 56

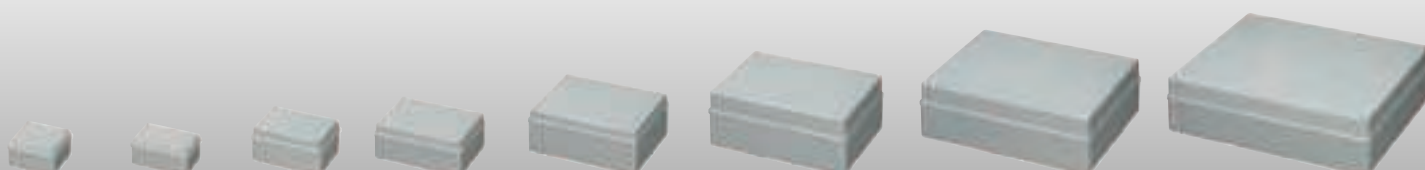


ITEM	INTERNAL DIMENSIONS mm	PACKAGING PIECES
EC410C4A	100x100x50	1/100
EC410C4RA	120x80x50	1/100
EC410C5A	150x110x70	1/42
EC410C6A	190x140x70	1/24
EC410C7A *	240x190x90	1/16
EC410C8A *	300x220x120	1/6
EC410C9A *	380x300x120	1/4
EC410C10A *	460x380x120	1/4

• Nylon screws

* Nylon screws and hinged cover

self-extinguishing



EC410C4A EC410C4RA EC410C5A EC410C6A EC410C7A EC410C8A EC410C9A EC410C10A

SMOOTH-SIDED JUNCTION BOXES **SERIES 480**

MAIN TECHNICAL FEATURES:

- Bottom and lid made in polycarbonate with heat resistance up to 120° C, for heavy duties.
- Screw cover.
- High-resistant soft rubber inner gasket.
- Possibility of a double insulation (Reference Standard EN 60439).
- Internal guide to fix the DIN rail EN 50022, brass terminal blocks or back plates.
- Single package with protective transparent film.



IP 56



ITEM	INTERNAL DIMENSIONS mm	PACKAGING PIECES
EC480C4	100x100x50	1/100
EC480C4R	120x80x50	1/100
EC480C5	150x110x70	1/42
EC480C6	190x140x70	1/24
EC480C7 *	240x190x90	1/16
EC480C8 *	300x220x120	1/6
EC480C9 *	380x300x120	1/4
EC480C10 *	460x380x120	1/4

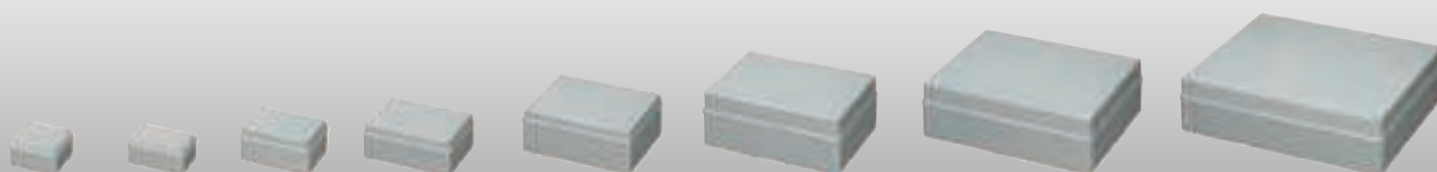
• Nylon screws

* Nylon screws and hinged cover



*HALOGEN
Free*

120° C



EC480C4

EC480C4R

EC480C5

EC480C6

EC480C7

EC480C8

EC480C9

EC480C10

SMOOTH-SIDED JUNCTION BOXES **SERIES 490**

MAIN TECHNICAL FEATURES:

- Bottom and lid made in polycarbonate with heat resistance up to 120°C, for heavy duties.
- The high lid assures a big inner volume for industrial applications.
- Screw cover.
- High-resistant soft rubber inner gasket.
- Possibility of a double insulation (Reference Standard EN 60439).
- Internal guide to fix the DIN rail EN 50022, brass terminal blocks or back plates.
- Single package with protective transparent film.



IP 56

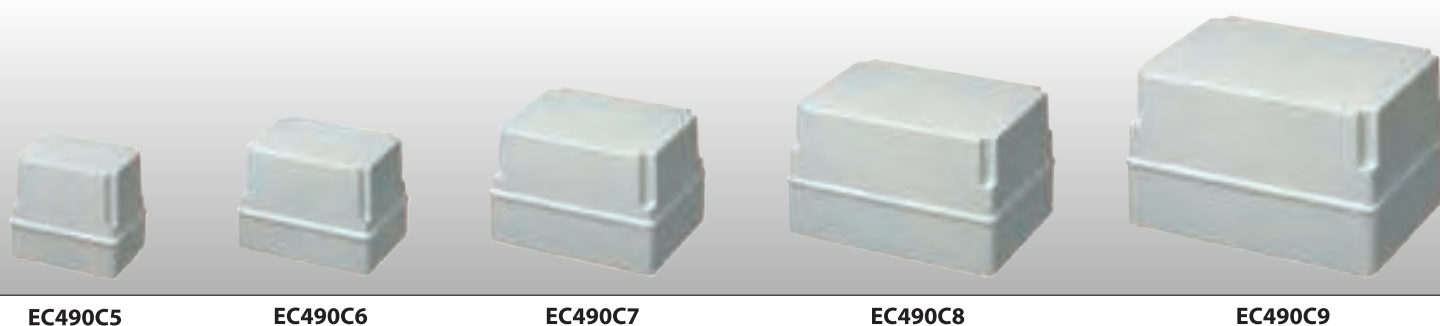


ITEM	INTERNAL DIMENSIONS mm	PACKAGING PIECES
EC490C5	150x110x140	1/18
EC490C6	190x140x140	1/16
EC490C7	240x190x160	1/8
EC490C8*	300x220x180	1/4
EC490C9*	380x300x180	1/3

• Nylon screws

* Nylon screws and hinged cover

HALOGEN
Free
120° C



EC490C5

EC490C6

EC490C7

EC490C8

EC490C9

QUICK-CLOSING JUNCTION BOXES WITH CABLE DIRECT INLET - 1/4 TURN SCREWS **SERIES 401/405/415**

MAIN TECHNICAL FEATURES:

- Bottom and lid made of thermoresistant ABS.
- Quick-closing 1/4 turn plastic screws. • New linking system of the cover to the box bottom.
- High-resistant soft rubber inner gasket.
- Possibility of a double insulation (Reference Standard EN 60439).
- Bottom suitable to house the brass terminal blocks.
- Single package with protective transparent film.

IP 55

IP 56



GREY RAL 7035

Junction boxes with cable direct inlets - IP55

ITEM	INTERNAL DIMENSIONS mm	HOLE NUMBER	MINIMUM MAXIMUM DIAM. mm	PACKAGING PIECES
EC401C4	105x105x55	7	2,5 - 20	1/60
EC401C5	155x110x70	10	2,5 - 20	1/45

Junction boxes with stepped glands - IP55

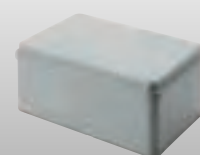
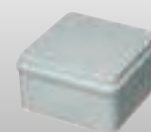
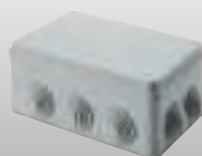
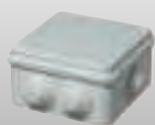
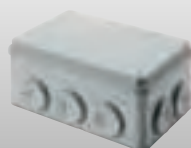
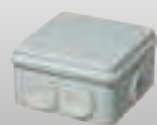
ITEM	INTERNAL DIMENSIONS mm	HOLE NUMBER	CONDUIT MAX DIAMETER mm	PACKAGING PIECES
EC405C4	105x105x55	7	25	1/60
EC405C5	155x110x70	10	25	1/45

Smooth-sided junction boxes - IP56

ITEM	INTERNAL DIMENSIONS mm	PACKAGING PIECES
EC415C4	105x105x55	1/80
EC415C5	155x110x70	1/42



*HALOGEN
Free*



EC401C4

EC401C5

EC405C4

EC405C5

EC415C4

EC415C5

QUICK-CLOSING JUNCTION BOXES WITH CABLE DIRECT INLET - 1/4 TURN SCREWS **SERIES 401A/405A/415A**

MAIN TECHNICAL FEATURES:

- Bottom and lid made of self-extinguishing V0 (UL94) ABS.
- Quick-closing ¼ turn plastic screws.
- New linking system of the cover to the box bottom.
- High-resistant soft rubber inner gasket.
- Possibility of a double insulation (Reference Standard EN 60439).
- Bottom suitable to house the brass terminal blocks.
- Single package with protective transparent film.

IP 55

IP 56



GREY RAL 7035

Junction boxes with cable direct inlets - IP55

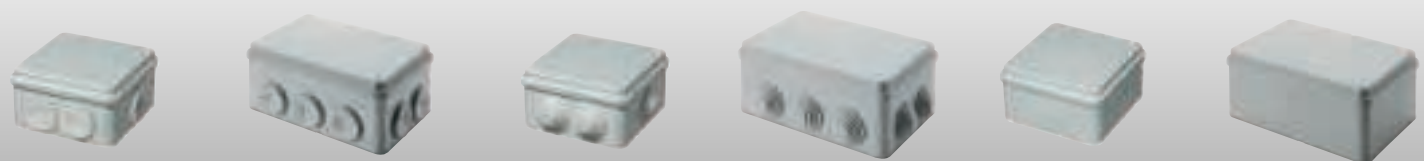
ITEM	INTERNAL DIMENSIONS mm	HOLE NUMBER	MINIMUM MAXIMUM DIAM. mm	PACKAGING PIECES
EC401C4A	105x105x55	7	2,5 - 20	1/60
EC401C5A	155x110x70	10	2,5 - 20	1/45

Junction boxes with stepped glands - IP55

ITEM	INTERNAL DIMENSIONS mm	HOLE NUMBER	CONDUIT MAX DIAMETER mm	PACKAGING PIECES
EC405C4A	105x105x55	7	25	1/60
EC405C5A	155x110x70	10	25	1/45

Smooth-sided junction boxes - IP56

ITEM	INTERNAL DIMENSIONS mm	PACKAGING PIECES
EC415C4A	105x105x55	1/80
EC415C5A	155x110x70	1/42



EC401C4A

EC401C5A

EC405C4A

EC405C5A

EC415C4A

EC415C5A

QUICK-CLOSING JUNCTION BOXES WITH CABLE DIRECT INLET - 1/4 TURN SERIES 406A/407A/416A

MAIN TECHNICAL FEATURES:

- Bottom and lid made of self-extinguishing V0 (UL94) ABS.
- Quick-closing 1/4 turn plastic screws.
- New linking system of the cover to the box bottom during the installation.
- High-resistant soft rubber inner gasket.
- Possibility of a double insulation (Reference Standard EN 60439).
- Bottom suitable to house the brass terminal blocks.
- Single package with protective transparent film.

IP 55

IP 56



RED RAL 3000

Junction boxes with cable direct inlets - IP55

ITEM	INTERNAL DIMENSIONS mm	HOLE NUMBER	MINIMUM MAXIMUM DIAM. mm	PACKAGING PIECES
EC407C4A	105x105x55	7	2,5 - 20	1/60
EC407C5A	155x110x70	10	2,5 - 20	1/45

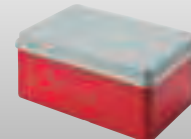
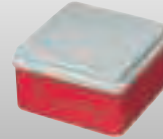
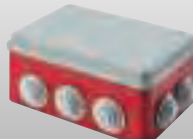
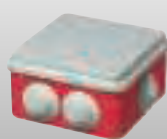
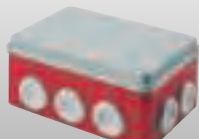
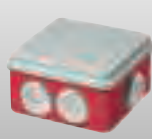
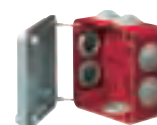
Junction boxes with stepped glands - IP55

ITEM	INTERNAL DIMENSIONS mm	HOLE NUMBER	CONDUIT MAX DIAM. mm	PACKAGING PIECES
EC406C4A	105x105x55	7	25	1/60
EC406C5A	155x110x70	10	25	1/45

Smooth-sided junction boxes - IP56

ITEM	INTERNAL DIMENSIONS mm	PACKAGING PIECES
EC416C4A	105x105x55	1/80
EC416C5A	155x110x70	1/42

self-extinguishing



EC407C4A

EC407C5A

EC406C4A

EC406C5A

EC416C4A

EC416C5A

BACK PLATES **SERIES 450** / DIN RAILS **SERIES 460**

BACK PLATES – MAIN TECHNICAL FEATURES:

- Made of galvanized steel, with anticorrosive electrolytic treatment.
- Easy fixing thanks to the holes on the bottom box.
- Fixing self-tapping screws included.
- Available also in insulating material.

DIN RAILS – MAIN TECHNICAL FEATURES:

- Made of galvanized steel, with anticorrosive tropicalized treatment.
- Guides in accordance with the Reference standard DIN EN 50022.
- Available with perforated back on request.

Back plates

ITEM		BOX DIMENSIONS	PACKAGING PIECES
METAL	INSULATING		
EC450P6	EC451P6	190x140	1/30
EC450P7	EC451P7	240x190	1/30
EC450P8	EC451P8	300x220	1/20
EC450P9	EC451P9	380x300	1/10
EC450P10	EC451P10	460x380	1/10

DIN EN 50022 rails for boxes

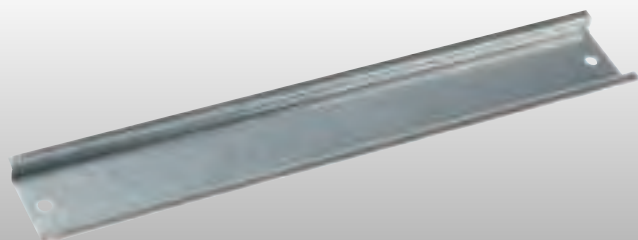
ITEM (DIN RAILS)	BOX DIMENSIONS	PACKAGING PIECES
EC460D5	150x110	10
EC460D6	190x140	10
EC460D7	240x190	10
EC460D8	300x220	10
EC460D9	380x300	10
EC460D10	460x380	10

DIN EN 50022 rails

ITEM	LENGTH mt	DESCRIPTION TYPE	DIMENSIONS mm	PACKAGING PIECES
EC460	2	BLANK DIN RAIL	35x7,5x1	20
EC460F	2	PERFORATED DIN RAIL	35x7,5x1	20
EC46015	2	BLANK DIN RAIL	35x15x1,5	20



EC450P



EC460D

PLASTIC STEPPED GLANDS **SERIES 470** / CAPS **SERIES TFLEX** / TERMINAL BLOCKS **SERIES 890**

MAIN TECHNICAL FEATURES:

- Stepped glands made of soft self-extinguishing plastic material.
- Up to 6 concentric circles.
- Insulation caps made of transparent polyethylene.
- They assure a double insulation to in the boxes, according to the Standard EN 60439.



GREY RAL 7035

Soft technopolymer stepped glands

ITEM	MAX CONDUIT DIAMETER mm	Ø HOLE mm	PACKAGING PIECES
EC47020	20	23	100/800
EC47025	25	29	100/600
EC47032	32	37	100/500
EC47040	40	48	100/300










Glands for direct inlet made of soft technopolymer Ø 25 mm

ITEM	MINIMUM MAXIMUM DIAMETER mm	Ø HOLE mm	PACKAGING PIECES
EC47025S	2,5 - 20	29	100/600

Screw caps for double insulation

ITEM	FOR BOX TYPE	PACKAGING PIECES
ECTFLEX13	C1-C2-C3-C4	100/2000
ECTFLEX18	C5-C6-C7-C8	100/2000
ECTFLEX25	C9-C10	100/1500

Insulated brass terminal block to be set on DIN EN 50022

ITEM	HOLES AND SECTION mm ²	COLOUR	PACKAGING PIECES
EC890050	Section 1x35 - 6x16		10/340
EC890051	Section 1x35 - 1x25 - 10x16		10/320
EC890052	Section 1x35 - 2x25 - 12x16		10/240
EC890053	Section 1x35 - 6x16		10/340
EC890054	Section 1x35 - 1x25 - 10x16		10/320
EC890055	Section 1x35 - 2x25 - 12x16		10/240
EC890056	Section 1x35 - 6x16		10/340
EC890057	Section 1x35 - 1x25 - 10x16		10/320
EC890058	Section 1x35 - 2x25 - 12x16		10/240



EC47020

EC47025

EC47032

EC47040

EC47025S

ECTFLEX13

ECTFLEX18

ECTFLEX25

EC890

WALL MOUNTING ALUMINIUM BOXES SERIES 485

MAIN TECHNICAL FEATURES:

- Bottom and lid made of aluminium alloy EN AB 46100 according to the Reference Standard UNI EN 1676.
- Boxes painted with epoxy resins.
- EPDM gaskets, stainless steel AISI 304 screws.
- Complete with earth connections, wall brackets incorporated in the bottom.
- Operating and installation range temperature: min. -40°C, max +125 °C.
- Impact resistance: IK 07 (impact up to 2J).
- Suitable to house back plates and DIN rails EN 50022.
- Single package with protective transparent film.



IP 66

GREY RAL 9006

Smooth-sided aluminium boxes

ITEM	INTERNAL DIMENSIONS mm	EXTERNAL DIMENSIONS mm	PACKAGING PIECES
EC485C1	90x90x53	100x100x59	1/32
EC485C2	128x103x55	140x115x60	1/24
EC485C3	154x129x58	166x142x64	1/16
EC485C4	178x155x74	192x168x80	1/18
EC485C5	239x202x85	253x217x93	1/8
EC485C6	294x244x114	314x264x122	1/2
* EC485C7	392x298x144	410x315x153	1/2

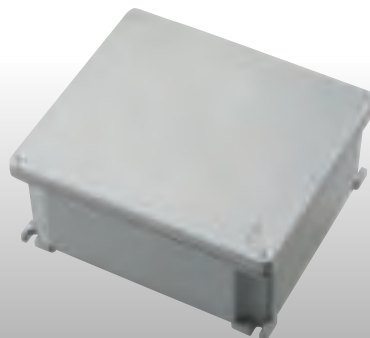
Back plates for aluminium boxes

ITEM	FOR BOX DIMENSIONS mm	PLATE DIMENSIONS mm	HOLE CENTRE DISTANCE mm	PACKAGING PIECES
EC455P2	140x115	122x97	107x66	1/30
EC455P3	166x142	147x123	121x98	1/30
EC455P4	192x168	165x124	153x112	1/30
EC455P5	253x217	206x172	188x153	1/20
EC455P6	314x264	254x210	238x198	1/10
EC455P7	410x315	349x260	333x248	1/10

DIN rails EN 50022 for aluminium boxes

ITEM	FOR BOX DIMENSIONS mm	LENGTH mm	PACKAGING PIECES
EC465D1	100x100	87	10
EC465D2	140x115	125	10
EC465D3	166x142	150	10
EC465D4	192x168	170	10
EC465D5	253x217	235	10
EC465D6	314x264	285	10
EC465D7	410x315	345	10

* IP55



WALL MOUNTING WARNING LIGHTS AND SELF-SUPPORTING COVERS

SERIES 320/316

MAIN TECHNICAL FEATURES:

- Cover made of transparent or coloured polycarbonate.
- Ready to house ø 20 mm conduits.
- Lamp holder type E14 included.
- Lamp up to 25 Watt (not included).

CE

WHITE RAL 9001

GREY RAL 7035

IP 55

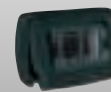
ANTHRACITE RAL 7021

Wall mounting warning lights

ITEM	COLOUR	EXTERNAL DIMENSIONS W x H x D mm	PACKAGING PIECES
EC320B	BLUE	67x83x91	1/30
EC320R	RED	67x83x91	1/30
EC320V	GREEN	67x83x91	1/30
EC320G	YELLOW	67x83x91	1/30
EC320T	TRANSPARENT	67x83x91	1/30

Self-supporting protecting cover for devices GW system, like MAGIC or similar - IP55

ITEM	DESCRIPTION	COLOUR	EXTERNAL DIMENSIONS W x H x D mm	PACKAGING PIECES
EC316B	Self-supporting 3 gang cover	WHITE RAL 9001	130x85x24	1/40
EC316G	Self-supporting 3 gang cover	GREY RAL 7035	130x85x24	1/40
EC316N	Self-supporting 3 gang cover	ANTHRACITE RAL 7021	130x85x24	1/40


EC320B
EC320R
EC320V
EC320G
EC320T

EC316B
EC316G
EC316N

WALL BOXES FOR ELECTRICAL DEVICES **SERIES 300/310**

MAIN TECHNICAL FEATURES:

- Suitable for electrical devices GW System, Magic or similar.
- Ready to house \varnothing 20 mm conduits.
- Stepped glands made of soft plastic material.
- IP55 with protection door with soft transparent heart.



IP 40
IP 55

GREY RAL 7035

ITEM	DEVICES NR.	IP	DIMENSIONS W x H x D mm	PACKAGING PIECES
EC300A1	1	40	67x83x51	1/60
EC300A2	2	40	67x83x51	1/60
EC300A3	3	40	100x83x51	1/40
EC300A4	4	40	122x83x51	1/30
EC300A6	6	40	177x83x51	1/20
EC300A4V	4 (2+2 vertical)	40	67x180x51	1/25
EC300A6V	6 (3+3 vertical)	40	100x180x51	1/18
EC310A1	1	55	67x83x59	1/50
EC310A2	2	55	67x83x59	1/50
EC310A3	3	55	100x83x59	1/35
EC310A4	4	55	122x83x59	1/25
EC310A4V	4 (2+2 vertical)	55	67x180x59	1/20
EC310A6V	6 (3+3 vertical)	55	100x180x59	1/15



EC300A1



EC300A2



EC300A3



EC300A4



EC300A6



EC300A4V



EC300A6V



EC310A1



EC310A2



EC310A3



EC310A4



EC310A4V




EC310A6V

BOX system

BOARDS WITH AN ALVEOLAR OR SMOOTH REVERSIBLE DOOR **SERIES 650**

MAIN TECHNICAL FEATURES:

- Bottom and lid made of thermoresistant halogen free technopolymer.
- Double-structured reversible door: alveolar or smooth.
- Shock resistance IK 08 (shocks up to 5j).
- Back and side pre-cuttings for an easy opening and conduit inlet.
- The bottom has integrated supports to house the back plates or the DIN rails.
- Cover fixing screws made of anticorrosive galvanized steel.
- Screw caps for double insulation included. 



IP 41



ITEM	EXTERNAL DIMENSIONS W x H x D mm	PACKAGING PIECES
EC65001	200x150x40	1/20
EC65002	200x150x60	1/40
EC65003	200x150x80	1/28
EC65004	300x200x40	1/30
EC65005	300x200x60	1/16
EC65006	300x200x80	1/12
EC65007	300x200x120	1/8
EC65008	400x300x60	1/8
EC65009	400x300x80	1/6
EC65010	400x300x120	1/4

